



## Large Item Collection

Large item collection is for disposal of unusable, broken, or damaged items too large to fit in regular household refuse bags.

**Register for large item collection online or by phone:**

**Website:** [www.erie.pa.us/largeitempickup](http://www.erie.pa.us/largeitempickup)

**Phone:** (814) 870-1550

- Requests will be scheduled on the next available date.
- All registered requests will receive a confirmation number and date.
- No items will be collected without a confirmation number and date.
- It is considered illegal dumping to set items out without a confirmation number or on a different date. Violators who illegally dump items will receive a citation.

### Acceptable items:

couches  
chairs  
mattresses  
dressers  
lamps  
tables

### Unacceptable Items:

large appliances  
automotive items\*  
electronic devices\*\*  
household hazardous waste\*\*  
construction materials

\*All other recycling and refuse guidelines remain in effect.

\*\*Tires, electronics, and household hazardous waste must be recycled and disposed of at registered collection events or facilities.

# City of Erie Recycling Guide 2020



## Compost Collection

**Sunday, March 15 to Thursday, December 10**

Only use open hard containers (50lb. limit) or compostable brown paper (lawn & leaf) bags. Acceptable compost includes grass, garden clippings, hedge trimmings, small branches, and leaves.

**City of Erie finished compost give-away sites:**

### Westside - Thursdays:

- Brabender Park: West 21<sup>st</sup> Street & Emerson Avenue
- C. Francis Hagerty Park: West 32<sup>nd</sup> Street & Schaper Avenue

### Eastside - Fridays:

- Joseph Walczak Park: East Grandview Blvd. & Alan Drive
- Roger Young Park: 18<sup>th</sup> Street & Downing Avenue
- Wallace Street Playground: Front Street & Wallace Street



## Leaf Collection

**Sunday, October 4 to Thursday, December 10**

Compostable (pale green) plastic bags that meet ASTM D6400 standards for compostability may be used during leaf season. Open hard containers may also be used for leaf collection.

**DO NOT** use cardboard boxes or any other non-compostable refuse or recycling bag.

**DO NOT** rake leaves into city streets.

**DO NOT** put in pet waste or cat litter.

**DO NOT** put grass and leaves in refuse.



## Holiday Tree Collection

**December 27, 2020 to January 21, 2021**

Place curbside on regular collection nights.



## Tire Recycling

**Saturday, May 2, 9:00 AM - 1:00 PM**

6 tires per resident. Only passenger vehicle and light truck tires. No rims.



## Electronics Recycling

**NEW FOR 2020 - TWO DATES:**

**Saturday, June 13, 9:00 AM - 1:00 PM**

**Saturday, October 3, 9:00 AM - 1:00 PM**

**Who:** City residents ONLY. Photo ID required.

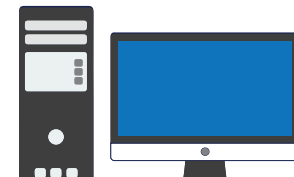
**What:** Drive through and drop-off electronics or tires on the appropriate day for recycling

**Where:** City of Erie Municipal Garage Complex  
1926 Holland Street

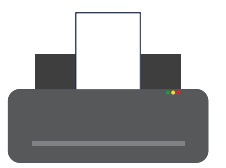
### Acceptable Electronics:



TVs



Computers & monitors



Printers



Keyboards



Mice



Speakers



Tablets

# Recycle these items at the curb



## Paper

newspaper  
office paper  
magazines



## Cardboard

corrugated  
cardboard  
paper board



## Plastic

plastic bottles  
plastic jugs  
plastic jars



## Metal Cans

food cans  
beverage cans

**NEW FOR 2020 - Blue bags are no longer acceptable.**  
**Use clear plastic bags or blue bins\*** for residential recycling.

Place clear recycling bags or blue bins curbside weekly apart from trash on regular refuse collection nights.



\*Blue bins are not provided by the City of Erie.

## Recycle these items elsewhere or at special events



## Glass



## Prescription or Medical waste



## Plastic bags



## Chemicals or household hazardous waste

For more information about where to recycle these items, visit: [www.erie.pa.us/recycling](http://www.erie.pa.us/recycling)  
or [www.eriecountypa.gov/county-services/other-services/recycling](http://www.eriecountypa.gov/county-services/other-services/recycling)

## Stop! Place these items in the trash



## Styrofoam



## Contaminated items with food



## Plastic cups, tubs, or toys



## Protecting Our Fresh Water



Stormwater from rain, snow, sleet, hail, and melting ice naturally seeps into the ground. Stormwater is needed to replenish ground water and drinking water supplies and is needed for water recreation and healthy wildlife habitats.

However, in urban areas, instead of soaking in, stormwater may flow across hard surfaces, such as driveways, parking lots, and streets into stormdrains. Stormdrains empty directly into nearby creeks, bays, and lakes, and the water is not treated. Any pollution stormwater picks up along the way, such as dirt, debris, oil, and chemicals, is also carried into our waterways. Stormwater may also cause flooding and erosion of stream banks as it rushes into waterways. Polluted stormwater may clog stormdrains and make the water unsafe for fish, wildlife, and humans.

Dumping is illegal on land and in water. Do not dump anything into stormdrains.

Compost leaves, dispose of pet waste with refuse, recycle used motor oil; dispose of cleaning supplies, pesticides, herbicides and fertilizers properly and safely; use natural and organic alternatives whenever possible; and install rain barrels to capture water for lawns and gardens.

**Help keep our land and water clean. Fresh water is priceless.**