



THE CITY OF ERIE

2024 CALENDAR & RECYCLING GUIDE



**RECYCLING
GUIDE INSIDE!**



OUR VISION FOR ERIE





VISIT
cityoferie.pa.us/OurVision
to see our vision.

Don't know who to call at City Hall? Citizen Response Center: (814) 870-1111

DECEMBER						
S	M	T	W	T	F	S
26	27	28	29	30	1	2
3	4	5	6	7	8	9
10	11	12	13	14	15	16
17	18	19	20	21	22	23
24	25	26	27	28	29	30
31	1	2	3	4	5	6

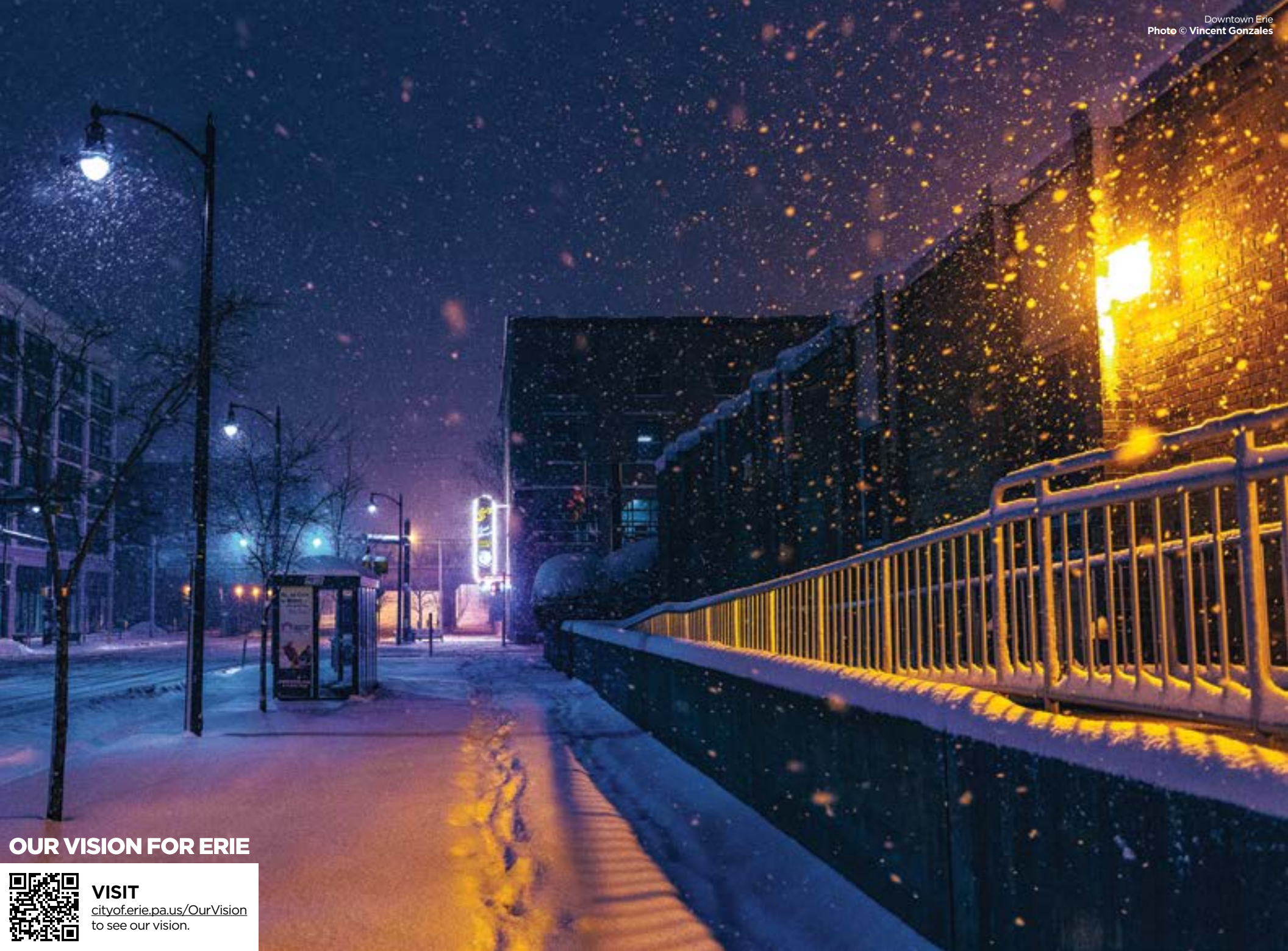
JANUARY

FEBRUARY						
S	M	T	W	T	F	S
28	29	30	31	1	2	3
4	5	6	7	8	9	10
11	12	13	14	15	16	17
18	19	20	21	22	23	24
25	26	27	28	29	1	2

SUNDAY	MONDAY	TUESDAY	WEDNESDAY	THURSDAY	FRIDAY	SATURDAY
31	1 City Hall closed New Year's Day Kwanzaa Ends	2 City Hall closed	3 Erie City Council Meeting @ 9 a.m.	4	5	6
7 Orthodox Christmas	8 Historic Review Commission @ 1 p.m. Redevelopment Authority of the City of Erie @ 3 p.m.	9 Trades Licensing Board @ 1 p.m. Zoning Hearing Board Meeting @ 1 p.m. National Law Enforcement Appreciation Day	10 Blighted Property Review Meeting @ 9 a.m. (Virtual)	11 Parking and Towing Board of Appeals @ 1:30 p.m.	12  Dog License Renewals Due	13
14	15 City Hall closed Martin Luther King, Jr. Day	16 City Planning Commission Meeting @ 1 p.m.	17 Erie City Council Meeting @ 6:30 p.m.	18  Holiday Tree Collection Ends Details on Page 28	19	20
21	22 Erie Land Bank Meeting @ 1 p.m.	23	24	25	26	27
28	29	30	31	1	2	3

Public authority meetings
For a full list and the latest schedule of all public authority meetings, visit cityoferie.pa.us/meetings

Don't forget to recycle!
See pages 26-29 to find out how.



OUR VISION FOR ERIE



VISIT
cityoferie.pa.us/OurVision
to see our vision.

Don't know who to call at City Hall? Citizen Response Center: (814) 870-1111

JANUARY						
S	M	T	W	T	F	S
31	1	2	3	4	5	6
7	8	9	10	11	12	13
14	15	16	17	18	19	20
21	22	23	24	25	26	27
28	29	30	31	1	2	3

FEBRUARY

BLACK HISTORY MONTH

MARCH						
S	M	T	W	T	F	S
25	26	27	28	29	1	2
3	4	5	6	7	8	9
10	11	12	13	14	15	16
17	18	19	20	21	22	23
24	25	26	27	28	29	30
31	1	2	3	4	5	6

SUNDAY	MONDAY	TUESDAY	WEDNESDAY	THURSDAY	FRIDAY	SATURDAY
28	29	30	31	1	2 <i>Groundhog Day</i>	3
4	5 <i>Historic Review Commission @ 1 p.m.</i>	6 <i>Trades Licensing Board @ 1 p.m.</i>	7 <i>Erie City Council Meeting @ 9 a.m.</i>	8 <i>Parking and Towing Board of Appeals @ 1:30 p.m.</i>	9	10 <i>Chinese New Year Losar (Buddhist New Year)</i>
11	12 <i>Redevelopment Authority of the City of Erie @ 3 p.m.</i>	13 <i>Zoning Hearing Board Meeting @ 1 p.m.</i> <i>Mardi Gras</i>	14 <i>Blighted Property Review Meeting @ 9 a.m. (Virtual)</i> <i>Ash Wednesday Valentine's Day</i>	15	16	17
18	19 <i>Erie Land Bank Meeting @ 1 p.m.</i> <i>Presidents' Day</i>	20 <i>City Planning Commission Meeting @ 1 p.m.</i>	21 <i>Erie City Council Meeting @ 6:30 p.m.</i>	22	23	24
25	26	27	28	29	1	2

Public authority meetings
For a full list and the latest schedule of all public authority meetings, visit cityoferie.pa.us/meetings

Don't forget to recycle!
See pages 26-29 to find out how.



OUR VISION FOR ERIE



VISIT
cityoferie.pa.us/OurVision
 to see our vision.

Don't know who to call at City Hall? Citizen Response Center: (814) 870-1111

MARCH

**WOMEN'S HISTORY MONTH
IRISH HERITAGE MONTH**

FEBRUARY						
S	M	T	W	T	F	S
28	29	30	31	1	2	3
4	5	6	7	8	9	10
11	12	13	14	15	16	17
18	19	20	21	22	23	24
25	26	27	28	29	1	2

APRIL						
S	M	T	W	T	F	S
31	1	2	3	4	5	6
7	8	9	10	11	12	13
14	15	16	17	18	19	20
21	22	23	24	25	26	27
28	29	30	1	2	3	4

SUNDAY	MONDAY	TUESDAY	WEDNESDAY	THURSDAY	FRIDAY	SATURDAY
25	26	27	28	29	1	2
3	4 <small>Historic Review Commission @ 1 p.m.</small>	5 <small>Trades Licensing Board @ 1 p.m.</small>	6 <small>Erie City Council Meeting @ 9 a.m.</small>	7	8	9
10 <small> Compost Collection Starts <i>Details on Page 28</i> Daylight Saving Time Begins Ramadan Begins</small>	11 <small>Redevelopment Authority of the City of Erie @ 3 p.m.</small>	12 <small>Zoning Hearing Board Meeting @ 1 p.m.</small>	13 <small>Blighted Property Review Meeting @ 9 a.m. (Virtual)</small>	14 <small>Parking and Towing Board of Appeals @ 1:30 p.m.</small>	15	16
17 <small>St. Patrick's Day</small>	18 <small>Erie Land Bank Meeting @ 1 p.m.</small>	19 <small>City Planning Commission Meeting @ 1 p.m.</small> <small>Spring Begins</small>	20 <small>Erie City Council Meeting @ 6:30 p.m.</small>	21	22	23 <small>Purim Begins</small>
24 <small>Palm Sunday Purim Ends</small>	25 <small>Holi</small>	26	27	28	29 <small>City Hall closed Good Friday</small>	30 <small>Doctors' Day</small>
31 <small>Easter City of Erie Real Estate Tax - Early Bird Due Stormwater Discount Winter Parking Regulations End <i>Details on Page 29</i></small>	1	2	<p>Public authority meetings</p> <p>For a full list and the latest schedule of all public authority meetings, visit cityoferie.pa.us/meetings</p>			

Don't forget to recycle!

See pages 26-29 to find out how.



OUR VISION FOR ERIE



VISIT
cityoferie.pa.us/OurVision
to see our vision.

Don't know who to call at City Hall? Citizen Response Center: (814) 870-1111

APRIL

MARCH						
S	M	T	W	T	F	S
25	26	27	28	29	1	2
3	4	5	6	7	8	9
10	11	12	13	14	15	16
17	18	19	20	21	22	23
24	25	26	27	28	29	30
31	1	2	3	4	5	6

MAY						
S	M	T	W	T	F	S
28	29	30	1	2	3	4
5	6	7	8	9	10	11
12	13	14	15	16	17	18
19	20	21	22	23	24	25
26	27	28	29	30	31	1

SUNDAY	MONDAY	TUESDAY	WEDNESDAY	THURSDAY	FRIDAY	SATURDAY
31	1 Historic Review Commission @ 1 p.m. Summer Parking Regulations Begin Details on Page 29 April Fool's Day	2 Trades Licensing Board @ 1 p.m.	3 Erie City Council Meeting @ 9 a.m.	4	5	6
7	8 Redevelopment Authority of the City of Erie @ 3 p.m. Ramadan Ends	9 Zoning Hearing Board Meeting @ 1 p.m. Eid al-Fitr Begins	10 Blighted Property Review Meeting @ 9 a.m. (Virtual) Eid al-Fitr Ends	11 Parking and Towing Board of Appeals @ 1:30 p.m.	12	13
14	15 Erie Land Bank Meeting @ 1 p.m. City, State, and Federal Income Tax Returns Due	16 City Planning Commission Meeting @ 1 p.m.	17 Erie City Council Meeting @ 6:30 p.m.	18	19	20
21	22 Passover Begins Earth Day	23	24 Administrative Professionals' Day	25	26 Arbor Day	27
28	29	30 County of Erie Real Estate Tax - Early Bird Due Details on Page 29 Passover Ends	1	2	3	4
5	6	7	<p>Public authority meetings For a full list and the latest schedule of all public authority meetings, visit cityoferie.pa.us/meetings</p>			

Don't forget to recycle!
See pages 26-29 to find out how.



OUR VISION FOR ERIE



VISIT
cityoferie.pa.us/OurVision
to see our vision.

Don't know who to call at City Hall? Citizen Response Center: (814) 870-1111

APRIL						
S	M	T	W	T	F	S
31	1	2	3	4	5	6
7	8	9	10	11	12	13
14	15	16	17	18	19	20
21	22	23	24	25	26	27
28	29	30	1	2	3	4

MAY

ASIAN PACIFIC AMERICAN HERITAGE MONTH
JEWISH AMERICAN HERITAGE MONTH

JUNE						
S	M	T	W	T	F	S
26	27	28	29	30	31	1
2	3	4	5	6	7	8
9	10	11	12	13	14	15
16	17	18	19	20	21	22
23	24	25	26	27	28	29
30	1	2	3	4	5	6

SUNDAY	MONDAY	TUESDAY	WEDNESDAY	THURSDAY	FRIDAY	SATURDAY
28	29	30	1 Erie City Council Meeting @ 9 a.m.	2 National Day of Prayer	3 Orthodox Holy Friday	4 Tire and Electronics Recycling Event 9 a.m. - 1 p.m. Details on Page 27 International Firefighters' Day
5 Orthodox Easter Cinco de Mayo	6 Historic Review Commission @ 1 p.m. Nurses Day	7 Trades Licensing Board @ 1 p.m.	8 Blighted Property Review Meeting @ 9 a.m. (Virtual)	9 Parking and Towing Board of Appeals @ 1:30 p.m.	10	11
12 Mother's Day	13 Erie Land Bank Meeting @ 1 p.m.	14 City Planning Commission Meeting @ 1 p.m.	15 Erie City Council Meeting @ 6:30 p.m. National Police Week	16	17	18 Armed Forces Day
19 National Public Works Week	20	21	22	23 Buddha Purnima	24	25
26	27 City Hall closed Memorial Day (Observed)	28	29	30	31 Stormwater - Face Amount Due City of Erie Real Estate Tax - Face Amount Due Details on Page 29	1

Public authority meetings
For a full list and the latest schedule of all public authority meetings, visit cityoferie.pa.us/meetings

Don't forget to recycle!
See pages 26-29 to find out how.



OUR VISION FOR ERIE



VISIT
cityoferie.pa.us/OurVision
to see our vision.

Don't know who to call at City Hall? Citizen Response Center: (814) 870-1111

JUNE

PRIDE MONTH
IMMIGRANT HERITAGE MONTH

MAY						
S	M	T	W	T	F	S
28	29	30	1	2	3	4
5	6	7	8	9	10	11
12	13	14	15	16	17	18
19	20	21	22	23	24	25
26	27	28	29	30	31	1

JULY						
S	M	T	W	T	F	S
30	1	2	3	4	5	6
7	8	9	10	11	12	13
14	15	16	17	18	19	20
21	22	23	24	25	26	27
28	29	30	31	1	2	3

SUNDAY	MONDAY	TUESDAY	WEDNESDAY	THURSDAY	FRIDAY	SATURDAY
26	27	28	29	30	31	1
2	3 Historic Review Commission @ 1 p.m.	4 Trades Licensing Board @ 1 p.m.	5 Erie City Council Meeting @ 9 a.m.	6	7	8
9	10 Redevelopment Authority of the City of Erie @ 3 p.m.	11 Zoning Hearing Board Meeting @ 1 p.m.	12 Blighted Property Review Meeting @ 9 a.m. (Virtual)	13 Parking and Towing Board of Appeals @ 1:30 p.m.	14 Flag Day	15
16 Father's Day Eid al-Adha Begins	17 Erie Land Bank Meeting @ 1 p.m. Eid al-Adha Ends	18 City Planning Commission Meeting @ 1 p.m.	19 Erie City Council Meeting @ 6:30 p.m. Juneteenth	20 Summer Solstice World Refugee Day	21	22
23	24	25	26	27	28	29
30 County of Erie Real Estate Tax - Face Amount Due Details on Page 29	1	2	<p>Public authority meetings For a full list and the latest schedule of all public authority meetings, visit cityoferie.pa.us/meetings</p>			

Don't forget to recycle!
See pages 26-29 to find out how.



OUR VISION FOR ERIE



VISIT
cityoferie.pa.us/OurVision
 to see our vision.

Don't know who to call at City Hall? Citizen Response Center: (814) 870-1111

JUNE						
S	M	T	W	T	F	S
26	27	28	29	30	31	1
2	3	4	5	6	7	8
9	10	11	12	13	14	15
16	17	18	19	20	21	22
23	24	25	26	27	28	29
30	1	2	3	4	5	6

JULY

AUGUST						
S	M	T	W	T	F	S
28	29	30	31	1	2	3
4	5	6	7	8	9	10
11	12	13	14	15	16	17
18	19	20	21	22	23	24
25	26	27	28	29	30	31

SUNDAY	MONDAY	TUESDAY	WEDNESDAY	THURSDAY	FRIDAY	SATURDAY
30	1 Historic Review Commission @ 1 p.m.	2 Trades Licensing Board @ 1 p.m.	3 Erie City Council Meeting @ 9 a.m. Lights Over Lake Erie	4 City Hall closed Independence Day	5	6
7 First day of Muharram	8 Redevelopment Authority of the City of Erie @ 3 p.m.	9 Zoning Hearing Board Meeting @ 1 p.m.	10 Blighted Property Review Meeting @ 9 a.m. (Virtual)	11 Parking and Towing Board of Appeals @ 1:30 p.m.	12	13
14	15 Erie Land Bank Meeting @ 1 p.m.	16 City Planning Commission Meeting @ 1 p.m. Ashura Begins	17 Erie City Council Meeting @ 6:30 p.m. Ashura Ends	18	19	20
21	22	23	24	25	26	27
28	29	30	31	1	2	3

Public authority meetings
 For a full list and the latest schedule of all public authority meetings, visit cityoferie.pa.us/meetings

Don't forget to recycle!
 See pages 26-29 to find out how.



Northwest Bank mainstage

OUR VISION FOR ERIE

VISIT
cityoferie.pa.us/OurVision
 to see our vision.

Don't know who to call at City Hall? Citizen Response Center: (814) 870-1111

AUGUST

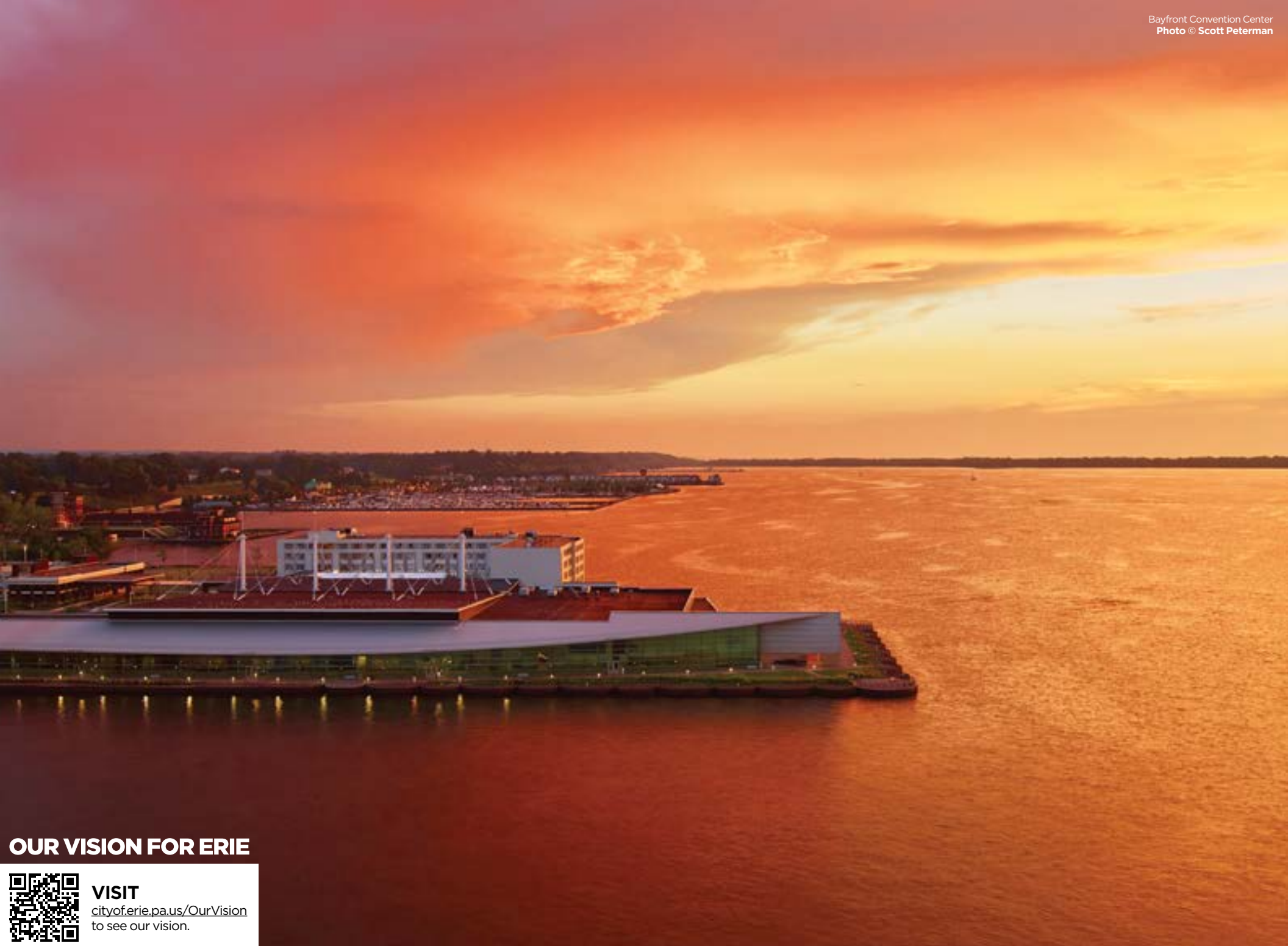
JULY						
S	M	T	W	T	F	S
30	1	2	3	4	5	6
7	8	9	10	11	12	13
14	15	16	17	18	19	20
21	22	23	24	25	26	27
28	29	30	31	1	2	3

SEPTEMBER						
S	M	T	W	T	F	S
1	2	3	4	5	6	7
8	9	10	11	12	13	14
15	16	17	18	19	20	21
22	23	24	25	26	27	28
29	30	1	2	3	4	5


SUNDAY	MONDAY	TUESDAY	WEDNESDAY	THURSDAY	FRIDAY	SATURDAY
28	29	30	31	1	2	3
4	5 Historic Review Commission @ 1 p.m. Last day of Muharram	6 Trades Licensing Board @ 1 p.m. National Night Out	7 Erie City Council Meeting @ 9 a.m.	8	9	10
11	12 Redevelopment Authority of the City of Erie @ 3 p.m.	13 Zoning Hearing Board Meeting @ 1 p.m. Erie Gives Day	14 Blighted Property Review Meeting @ 9 a.m. (Virtual) 814 Day	15 Parking and Towing Board of Appeals @ 1:30 p.m.	16 CelebrateErie Begins	17
18 CelebrateErie Ends	19 Erie Land Bank Meeting @ 1 p.m.	20 City Planning Commission Meeting @ 1 p.m.	21 Erie City Council Meeting @ 6:30 p.m.	22	23	24
25	26	27	28	29	30	31

Public authority meetings
 For a full list and the latest schedule of all public authority meetings, visit cityoferie.pa.us/meetings

Don't forget to recycle!
 See pages 26-29 to find out how.



OUR VISION FOR ERIE



VISIT
cityoferie.pa.us/OurVision
to see our vision.


Don't know who to call at City Hall? Citizen Response Center: (814) 870-1111

AUGUST						
S	M	T	W	T	F	S
28	29	30	31	1	2	3
4	5	6	7	8	9	10
11	12	13	14	15	16	17
18	19	20	21	22	23	24
25	26	27	28	29	30	31

SEPTEMBER

NATIONAL HISPANIC HERITAGE MONTH

OCTOBER						
S	M	T	W	T	F	S
29	30	1	2	3	4	5
6	7	8	9	10	11	12
13	14	15	16	17	18	19
20	21	22	23	24	25	26
27	28	29	30	31	1	2

SUNDAY	MONDAY	TUESDAY	WEDNESDAY	THURSDAY	FRIDAY	SATURDAY
1	2 City Hall closed Labor Day	3 Trades Licensing Board @ 1 p.m.	4 Erie City Council Meeting @ 9 a.m.	5	6	7
8 Grandparents' Day	9 Historic Review Commission @ 1 p.m. Redevelopment Authority of the City of Erie @ 3 p.m.	10 Zoning Hearing Board Meeting @ 1 p.m.	11 Blighted Property Review Meeting @ 9 a.m. (Virtual) Patriot Day	12 Parking and Towing Board of Appeals @ 1:30 p.m.	13	14
15	16 Erie Land Bank Meeting @ 1 p.m.	17 City Planning Commission Meeting @ 1 p.m. Constitution Day	18 Erie City Council Meeting @ 6:30 p.m.	19	20	21
22 Fall Begins	23	24	25	26	27	28
29	30  Erie School District Real Estate Tax - Early Bird Due <i>Details on Page 29</i>	1	2	3	4	5

Public authority meetings
For a full list and the latest schedule of all public authority meetings, visit cityoferie.pa.us/meetings

Don't forget to recycle!
See pages 26-29 to find out how.



OUR VISION FOR ERIE



VISIT
cityoferie.pa.us/OurVision
to see our vision.

Don't know who to call at City Hall? Citizen Response Center: (814) 870-1111

SEPTEMBER						
S	M	T	W	T	F	S
1	2	3	4	5	6	7
8	9	10	11	12	13	14
15	16	17	18	19	20	21
22	23	24	25	26	27	28
29	30	1	2	3	4	5

OCTOBER

GERMAN, ITALIAN, & POLISH AMERICAN HERITAGE MONTH

NOVEMBER						
S	M	T	W	T	F	S
27	28	29	30	31	1	2
3	4	5	6	7	8	9
10	11	12	13	14	15	16
17	18	19	20	21	22	23
24	25	26	27	28	29	30

SUNDAY	MONDAY	TUESDAY	WEDNESDAY	THURSDAY	FRIDAY	SATURDAY
29	30	1 Trades Licensing Board @ 1 p.m.	2 Erie City Council Meeting @ 9 a.m. National Coffee with a Cop Day Rosh Hashanah Begins	3	4 Rosh Hashanah Ends	5
6 Leaf Collection Begins Details on Page 28 National Fire Prevention Week	7 Historic Review Commission @ 1 p.m.	8 Zoning Hearing Board Meeting @ 1 p.m.	9 Blighted Property Review Meeting @ 9 a.m. (Virtual)	10 Parking and Towing Board of Appeals @ 1:30 p.m.	11 Yom Kippur Begins	12 Yom Kippur Ends
13	14 Erie Land Bank Meeting @ 1 p.m. Indigenous Peoples' Day	15 City Planning Commission Meeting @ 1 p.m.	16 Erie City Council Meeting @ 6:30 p.m. Boss's Day	17	18	19
20	21	22	23	24 United Nations Day	25	26
27	28	29	30	31 Summer Parking Regulations End Details on Page 29 Halloween Trick-or-Treating, 6-8 p.m. Diwali	1	2
3	4	5	<p>Public authority meetings For a full list and the latest schedule of all public authority meetings, visit cityoferie.pa.us/meetings</p>			

Don't forget to recycle!
See pages 26-29 to find out how.



OUR VISION FOR ERIE



VISIT
cityoferie.pa.us/OurVision
to see our vision.

Don't know who to call at City Hall? Citizen Response Center: (814) 870-1111

OCTOBER						
S	M	T	W	T	F	S
29	30	1	2	3	4	5
6	7	8	9	10	11	12
13	14	15	16	17	18	19
20	21	22	23	24	25	26
27	28	29	30	31	1	2

NOVEMBER

NATIVE AMERICAN HERITAGE MONTH

DECEMBER						
S	M	T	W	T	F	S
1	2	3	4	5	6	7
8	9	10	11	12	13	14
15	16	17	18	19	20	21
22	23	24	25	26	27	28
29	30	31	1	2	3	4

SUNDAY	MONDAY	TUESDAY	WEDNESDAY	THURSDAY	FRIDAY	SATURDAY
27	28	29	30	31	1 Winter Parking Regulations Begin <i>Details on Page 29</i>	2
3 <i>Daylight Saving Time Ends</i>	4 Historic Review Commission @ 1 p.m.	5 Trades Licensing Board @ 1 p.m. <i>Election Day (General)</i>	6 Erie City Council Meeting @ 9 a.m.	7	8	9
10 <i>Diwali</i>	11 Redevelopment Authority of the City of Erie @ 3 p.m. <i>Veterans Day</i>	12 Zoning Hearing Board Meeting @ 1 p.m.	13 Blighted Property Review Meeting @ 9 a.m. (Virtual)	14 Parking and Towing Board of Appeals @ 1:30 p.m.	15	16
17	18 Erie Land Bank Meeting @ 1 p.m.	19 City Planning Commission Meeting @ 1 p.m.	20 Erie City Council Meeting @ 6:30 p.m.	21	22	23
24	25	26	27 <i>Gurpurab</i>	28 City Hall closed <i>Thanksgiving</i>	29 City Hall closed <i>Native American Heritage Day</i>	30 Erie School District Real Estate Tax - Face Amount Due <i>Details on Page 29</i> <i>Small Business Saturday</i>
1	2	3	<p>Public authority meetings For a full list and the latest schedule of all public authority meetings, visit cityoferie.pa.us/meetings</p>			

Don't forget to recycle!
See pages 26-29 to find out how.



OUR VISION FOR ERIE



VISIT
cityoferie.pa.us/OurVision
to see our vision.

Don't know who to call at City Hall? Citizen Response Center: (814) 870-1111

NOVEMBER						
S	M	T	W	T	F	S
27	28	29	30	31	1	2
3	4	5	6	7	8	9
10	11	12	13	14	15	16
17	18	19	20	21	22	23
24	25	26	27	28	29	30

DECEMBER

JANUARY						
S	M	T	W	T	F	S
29	30	31	1	2	3	4
5	6	7	8	9	10	11
12	13	14	15	16	17	18
19	20	21	22	23	24	25
26	27	28	29	30	31	1

SUNDAY	MONDAY	TUESDAY	WEDNESDAY	THURSDAY	FRIDAY	SATURDAY
1	2 Historic Review Commission @ 1 p.m. Harry T. Burleigh Day	3 Trades Licensing Board @ 1 p.m.	4 Erie City Council Meeting @ 9 a.m.	5 Leaf & Compost Collection Ends <i>Details on Page 28</i>	6	7 Pearl Harbor Remembrance Day
8	9 Redevelopment Authority of the City of Erie @ 3 p.m.	10 Zoning Hearing Board Meeting @ 1 p.m. Human Rights Day	11 Blighted Property Review Meeting @ 9 a.m. (Virtual)	12 Parking and Towing Board of Appeals @ 1:30 p.m.	13	14
15	16 Erie Land Bank Meeting @ 1 p.m.	17 City Planning Commission Meeting @ 1 p.m.	18 Erie City Council Meeting @ 6:30 p.m.	19	20	21 Winter Solstice
22	23 Holiday Tree Collection Starts <i>Details on Page 28</i>	24 City Hall closed Christmas Eve	25 City Hall closed Christmas Day Hanukkah Begins	26 Kwanzaa Begins	27	28
29	30	31 City Hall closed New Year's Eve	1 City Hall closed New Year's Day	2	3	4

Public authority meetings
For a full list and the latest schedule of all public authority meetings, visit cityoferie.pa.us/meetings

Don't forget to recycle!
See pages 26-29 to find out how.



THE CITY OF ERIE

2024 RECYCLING GUIDE

Stop! Place these items in the trash



Styrofoam

Contaminated items with food or grease

Plastic cups, tubs, or toys

High-gloss paper

Recycle these items at the curb



Paper

Newspaper, office paper

Plastic

Any plastic container with a screw-top lid; remove cap and throw in the trash

Cardboard

Corrugated cardboard, paper board

Metal Cans

Food cans, beverage cans

Recycle these items elsewhere



Plastic bags

Prescription and medical waste

Chemicals or household hazardous waste

Find out where to recycle these items and more by scanning the QR code, visiting cityof.erie.pa.us/recycling or by calling (814) 870-1450.



Recycle glass at these locations



Rinse glass containers and remove caps or lids. Labels can stay on. Drop off glass to recycle at one of the following locations:

Pro Waste Services Inc.

www.prowasteinc.net/recycling-center

- Glenwood Park – W. 41st St. and Glenwood Park Avenue

Bayfront Glass

www.bayfrontglass.com

- Main Location – 1310 East Ave.
- Whole Foods Co-op Location – 1341 W. 26th St.

For info about Erie County recycling programs visit:

eriecountypa.gov/departments/planning-and-community-development/programs/recycling

Recycling Events

Who: City residents ONLY. Photo ID required.

What: Drive through and drop-off electronics or tires on the appropriate day for recycling.

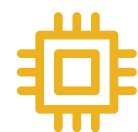
Where: City of Erie Municipal Garage Complex – 1926 Holland Street.



Tire Recycling

Saturday, May 4, 9 a.m. – 1 p.m.

6 tires per resident. Only passenger vehicles and light truck tires. No rims.



Electronics Recycling

Saturday, May 4, 9 a.m. – 1 p.m.

Acceptable Items: TVs, computers, monitors, keyboards, mice, printers, speakers and tablets

How to recycle items at the curb



Place clear recycling bags or blue bins curbside apart from trash on regular refuse collection nights.

Blue bags are not acceptable.

Use clear plastic bags or blue bins for residential recycling.

Blue bins are not provided by the City of Erie.

Do not mix trash with recyclables.

Once contaminated, the recyclable items will not be sorted and the entire bag is thrown into the trash.

Compost Collection

Sunday, Mar. 10 to Thursday, Dec. 5

Only use open hard containers (50 lb. limit) or compostable brown paper (lawn & leaf) bags.

Acceptable compost includes grass, garden clippings, hedge trimmings, small branches, and leaves.

City of Erie finished compost give-away sites:

Westside – Thursdays:

- Brabender Park: West 21st Street and Emerson Avenue
- C. Francis Hagerty Park: West 32nd Street and Schaper Avenue

Eastside – Fridays:

- Joseph Walczak Park: E. Grandview Boulevard and Alan Drive
- Rodger Young Park: East 18th Street and Downing Avenue
- Wallace Street Playground: Front and Wallace Streets

Leaf Collection

Sunday, Oct. 6 to Thursday, Dec. 5

Compostable (pale green) plastic bags that meet ASTM D6400 standards for compostability may be used during leaf season.

Open hard containers may also be used for leaf collection.

DO NOT use cardboard boxes or any other non-compostable refuse or recycling bag.

DO NOT rake or blow leaves into city streets. This creates a hazardous situation for cars, motorcycles, cyclists, walkers, and runners. Wet leaves can cause slippery conditions. Cars parked over dry leaves can catch fire.

DO NOT put pet waste or cat litter in with leaves.

DO NOT put grass and leaves in refuse.

Holiday Tree Collection

Monday, Dec. 25, 2023 to Thursday, Jan. 18, 2024

Place curbside on regular collection nights.

Large Item Collection

Large item collection is for disposal of unusable, broken, or damaged items too large to fit in regular household refuse bags.

Register for large item collection online or by phone:

Website: cityof.erie.pa.us/largeitempickup

Phone: (814) 870-1550

- Requests will be scheduled on the next available date of your regular refuse pick-up night.
- All registered requests will receive a confirmation number and date.
- No items will be collected without a confirmation number and date.
- It is considered illegal dumping to set items out without a confirmation number or on a different date. Violators who illegally dump items will receive a citation.

Large Item Collection Acceptable items:

Couches, chairs, mattresses, dressers, lamps, tables

Unacceptable Items:

Large appliances, automotive items, electronic devices, household hazardous waste, and construction materials.

All other recycling and refuse guidelines remain in effect.

Tires, electronics, and household hazardous waste must be recycled and disposed of at registered collection events or facilities (See page 27 for details).

Parking Regulations

Winter parking regulations for plowing, Nov. 1 – Mar. 31

Winter Parking Regulations are enforced weekdays from Nov. 1 to Mar. 31 from 8 a.m. to 4 p.m. or on a weekend when a snow emergency is declared.

Summer parking regulations for street sweeping, Apr. 1 – Oct. 31

Summer Parking Regulations are posted and enforced for a specific day of the week in each neighborhood, Monday through Friday 8 a.m. to 4 p.m.

Property Taxes

How/Where to pay:

Online at cityof.erie.pa.us

Outside drop box located in front of City Hall on the State Street side entrance. Checks only.

Pay in person or mail full payment with tax bill to:

City of Erie Treasurer
626 State St. Room 105
Erie, PA 16501-1128
Phone: (814) 870-1210

City of Erie Treasurer
PO Box 1534
Hermitage, PA 16148-0534
Phone: (814) 870-1210

Early Bird Due Dates:

2% discount if paid on or before:

- City of Erie Real Estate Tax (Mar. 31)
- County of Erie Real Estate Tax (Apr. 30)
- Erie School District Real Estate Tax (Sept. 30)

For Early Bird real estate tax due dates, visit: cityof.erie.pa.us/taxes

Face Amount Due Dates:

- City of Erie Real Estate Tax (May 31)
- County of Erie Real Estate Tax (Jun. 30)
- Erie School District Real Estate Tax (Nov. 30)

For face amount real estate tax due dates, visit: cityof.erie.pa.us/taxes

Dog License Renewals

How/Where to pay:

Online at cityof.erie.pa.us

In person or mailed to:

City Treasurer's Office
626 State St. Room 105
Erie, PA 16501
Hours: 8:30 a.m. to 4:30 p.m.
Phone: (814) 870-1210

Due date: Jan. 12, 2024 for year 2024

Download additional Dog License Applications at cityof.erie.pa.us

Animal Complaints

Animal Enforcement
626 State St. Room 111
Erie, PA 16501
Phone: (814) 870-1136 or (814) 870-1125

What is stormwater?

Stormwater is water from rain, snow and melting ice. In a natural setting, such as grasslands and wooded areas, stormwater can slowly infiltrate into the soil or flow overland into adjacent streams and other water bodies. In urbanized areas, such as cities or towns, many of these pervious surfaces are replaced with streets, highways, parking lots, and roof tops. Stormwater will flow over these hard surfaces into storm drains, which drain directly into local streams and Presque Isle Bay via the City's storm sewer system.

How can stormwater become polluted?

When stormwater flows across streets, highways, parking lots, and roof tops, it becomes polluted from litter, dirt, oil, and chemicals. Illegally dumping materials and fluids down storm drains also pollutes Lake Erie and is considered an "illicit discharge." Since the storm drains empty into our waterways, this can create an unsafe environment for our community and aquatic ecosystem. Pollution impacts water quality and habitat health and can result in restrictions on drinking water and recreational activities. Help keep Lake Erie and Presque Isle Bay clean!

To report an illicit discharge please call 814-870-1340.

What is the purpose of the stormwater fee?

The stormwater fee will enable the City to: maintain and replace existing system infrastructure, meet federal and state regulations, employ a stormwater inspector and stormwater project engineer, monitor stormwater systems for adequate functionality, and aid in mitigating impaired streams.

For more information regarding the stormwater fee, visit cityof.erie.pa.us/stormwater

Due Dates

Early Bird Due Date: March 31, 2024
Face Amount Due Date: May 5, 2024

A New Year for Erie



As we move into 2024, I am excited and optimistic about our future. Community partners are working together like never before to implement priority projects and initiatives to Activate our Vision for Erie as a Community of Choice where we celebrate our:

- Rich Cultural Diversity
- Welcoming, Vibrant Neighborhoods
- World-Class Downtown and Bayfront
- Excellent Education for Everyone
- Abundance of Family-Sustaining Jobs

This annual calendar provides important dates, phone numbers, and information about recycling and other city services to refer to throughout the year. Thanks also to all of the local photographers who captured and submitted these incredible photos of our beautiful city.

I firmly believe that we will continue to make progress in 2024. I challenge you to be your best, take care of one another, and serve our community as we work together to Build Opportunity, Restore Hope, and Transform Erie.

If you have a comment, question, or want to share a positive experience you had with a city employee, contact our Citizen Response Center at 814-870-1111 or online at cityof.erie.pa.us.

I hope to see you around town often during 2024!

Joe Schember
Joe Schember, Mayor

Our Mission

**Build Opportunity.
Restore Hope.
Transform Erie.**

Our Vision

**Erie is a Community of Choice.
We celebrate our:**

- Rich Cultural Diversity
- Welcoming, Vibrant Neighborhoods
- World-class Downtown and Bayfront
- Excellent Education for Everyone
- Abundance of Family-sustaining Jobs



The City of Erie reserves the right to not use photos and/or may continue to use in future years without further consent. Photographers will receive credit for photos within the calendar and other city publications. Copyright © 2024 City of Erie. All rights reserved. All materials contained herein are protected by United States copyright law and may not be reproduced, distributed, transmitted, displayed, published, or broadcast without the prior written permission of the City of Erie.

Don't know who to call at City Hall? Citizen Response Center: (814) 870-1111

Directory

Emergencies

Immediate Danger—Call 911

- Fire
- Medical
- Crime

Mental Health Emergency

Call Crisis Services (814) 456-2014

- Thoughts of suicide
- Depression or anxiety
- Family concerns
- Feeling overwhelmed
- Loss
- Parenting needs
- Relationship problems
- Stressful events (financial, job loss, homelessness)
- Substance abuse
- Uncomfortable symptoms of mental illness

Social Services

Social Services Assistance—Call 211 (powered by United Way of Erie County)

- Child care and parenting
- Clothing and household
- Disaster Relief
- Education
- Employment and income
- Food
- Government and legal
- Healthcare
- Housing and shelter
- Mental health and addictions
- Transportation assistance
- Utilities
- Volunteer opportunities

Homelessness Assistance—

Call Erie County Coordinated Entry at (814) 743-5837

City of Erie Departments

Communications

- Director (814) 870-1285
- Citizen Response Center (814) 870-1111
- Community Liaison (814) 870-1236

Erie Fire Department

- Emergency - Call 911
- Non-emergency (814) 870-1400

Erie Police Department

- Emergency - Call 911
- Non-emergency (814) 870-1125
- Tip Line (814) 870-1199
- Fingerprinting (814) 870-1140

Planning

- Code Enforcement (814) 870-1473
- Zoning (814) 870-1273

Public Works

- Engineering (814) 870-1371
- Parks (814) 870-1450
- Recycling (814) 870-1450
- Refuse
 - Missed Pickup (814) 870-1450
 - Large Item Pickup Scheduling (814) 870-1550 or visit cityof.erie.pa.us/largeitempickup
- Sewers
 - Billing (Erie Water Works) (814) 870-8000
 - Repair (814) 870-1350
- Streets
 - Pothole Hotline (814) 870-1340
 - Plowing (814) 870-1340

Treasurer

- Property Taxes (814) 870-1210
- Local Income Tax (Berkheimer Associates) (814) 455-2710
- City Dog Licenses (814) 870-1210

Government & Education

County of Erie

- Courthouse (814) 451-6000
- Voter Registration (814) 451-6275
- Department of Health (814) 451-6700
- PA Dog License Registration (814) 451-6239

Commonwealth of Pennsylvania

- Vital Records (814) 871-4261
- PennDOT (Erie Office) (814) 871-4411

Erie's Public Schools

- Erie School District (814) 874-6000

Utilities

Erie Water Works

- Fire hydrant, water main, service line leaks (814) 870-8000
- Customer Service (814) 870-8000

National Fuel Gas

- Gas Leak 1-800-444-3130
- Call before you dig - Call 811
- Customer Service (814) 871-8200

Penelec

- Power Outage 1-888-544-4877
- Customer Service 1-800-545-7741

Authorities

Erie Airport Authority
(814) 833-4258

Erie County Convention Center Authority (Erie Events)
(814) 453-7117

Erie Housing Authority
(814) 452-2425

Erie Metro Transit Authority (EMTA)
(814) 459-4287

Erie Parking Authority
(814) 456-7588

Erie Redevelopment Authority
(814) 870-1540

Erie Sewer Authority
(814) 870-1360

Erie Water Authority (Erie Water Works)
(814) 870-8000

Erie-Western PA Port Authority
(814) 455-7557

Erie Zoological Society (Erie Park Authority)
(814) 864-4091

For more information about authorities, boards, and commissions, visit cityof.erie.pa.us/abc



THE CITY OF ERIE

CALENDAR & RECYCLING GUIDE

626 STATE STREET ERIE, PA 16501

Our Commitment to Erie

As Mayor, I am proud of our City of Erie employees for their hard work, dedication, and professionalism in providing City services to everyone in our community.

- **Our Department of Economic and Community Development** deploys federal funding to community groups and shelters and provides loans and micro-grants to businesses and entrepreneurs.
- **Our Department of Planning and Neighborhood Resources** is developing neighborhood plans; piloting our Love Your Block initiative applying for and administering millions of dollars in grants; managing code enforcement; and preparing to embark on a comprehensive city-wide parks and recreation plan.
- **Our Erie Fire Department** teaches fire safety, participates in community outreach, and efficiently responds to fires and medical emergencies, making more than 9,000 calls for service annually.
- **Our Erie Police Department** continuously trains, quickly responds, and proactively builds community relationships. Our EPD responds to 60,000 calls per year, has grown the Police Athletic League from 6 officers and 35 students to 100 officers and 1,200 students, deployed body-worn cameras, expanded bike patrols, and reinstated the juvenile unit and crisis car.
- **Our Public Works Department** provides our recycling, refuse, sewer, wastewater, stormwater management, and engineering services as well as maintains our streets, vehicles, signs, properties, golf courses, and parks.
- **Our City Hall administration and staff** consistently work to activate our vision and professionally manage our community relations, taxes, finances, accounting, legal, technology, personnel, and printing.

We strive to make values-driven, data-informed decisions to benefit our residents and business owners. Over the past 6 years, we have paid down debt, shored up the pensions, increased grants and loans to businesses, provided an unprecedented amount of funding to homeowners, built relationships in the community, and for the 5th year in a row, we have maintained the current rate of property taxes. Our City of Erie team provides critical services. And, every day, we strive to identify and secure additional resources to benefit our residents. This is our commitment to Erie.

Please join me in saying “thank you” to our City of Erie team!

Joe Schember, Mayor